

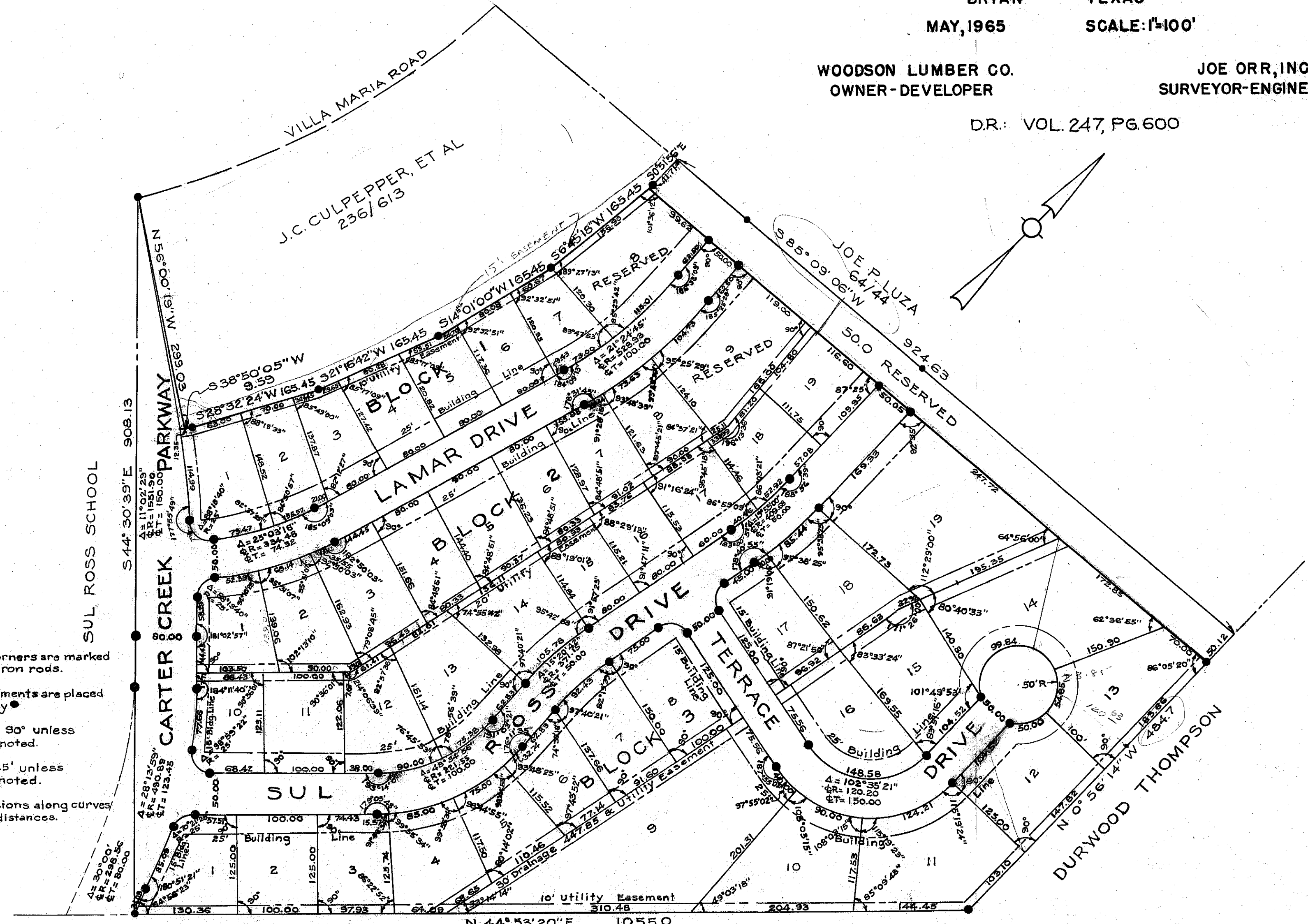
WOODSON TERRACE
NUMBER ONE

BRYAN TEXAS
MAY, 1965 SCALE: 1"=100'

WOODSON LUMBER CO.
OWNER-DEVELOPER

JOE ORR, INC.
SURVEYOR-ENGINEER

DR.: VOL. 247, PG. 600



All property corners are marked by 1/2" round iron rods.
Concrete monuments are placed as shown by ●
All angles are 90° unless otherwise noted.
All radii are 25' unless otherwise noted.
All lot dimensions along curves are chord distances.

N 44° 53' 20" E 1055.0
J. A. SKRIVANEK
241/161

402